

**NOTE: this sizing information applies to Sport Fit recumbent jerseys also.**

**Men's Sport Fit Cycling Jersey Measurements - Raglan Sleeve Style**  
The Genesis / Volare Series

SPORT FIT is female / male specific.  
Designed for a more body contouring fit.

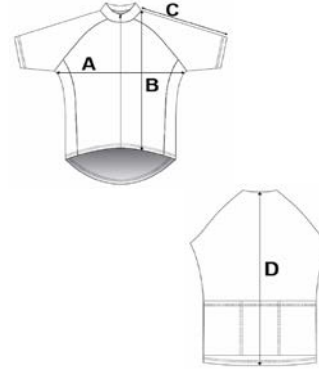
This is a cycling jersey true classic as we scoured the world to find the just the right fabrics.  
This series is built in smaller increments giving you more choices.  
Smaller increments between sizes provide for a better fit.

- > Note: All measurements are approximate. Our Size Chart is NOT the body size. It is a clothing size.
- > If you're unsure which size to buy. Measure a T-shirt or jersey you already own that fits you well.
- > Lay the T-shirt or jersey on a flat surface and use the guide to measure the 1/2 chest from armpit to armpit.
- > Compare those measurements to this size chart.

	A Chest Across	B Front Length	C Short Sleeve Length	D Back Length
	<b>Note this is 1/2 Chest</b>			
2X Small	18.25" (46.5cm)	24.25" (61.5cm)	13.25" (34cm)	25.5" (65cm)
X Small	19" (48cm)	24.75" (63cm)	13.75" (35cm)	26" (66cm)
Small	19.75" (50.5cm)	25.25" (64cm)	14" (36cm)	26.75" (68cm)
Medium	20.5" (52cm)	25.75" (65.5cm)	14.5" (37cm)	28" (71cm)
Large	20.75" (53cm)	27" (69cm)	14.75" (38cm)	28.5" (72cm)
X Large	21.25" (54cm)	28" (71cm)	15.25" (39cm)	29" (73.5cm)
2X Large	22.5" (57cm)	28.5" (72.5cm)	15.75" (40cm)	30" (76cm)
3X Large	23.25" (59cm)	29.5" (75cm)	16" (41cm)	30.75" (78cm)
4X Large	24" (61cm)	30.5" (77cm)	16.5" (42cm)	32.25" (82cm)
5X Large	24" (63cm)	31" (79cm)	17" (43cm)	33" (84cm)
6X Large	25.5" (65cm)	31.75" (81cm)	17.25" (44cm)	34" (86cm)
7X Large	25.75" (67cm)	32.75" (83cm)	17.75" (45cm)	34.5" (88cm)

Note: Our custom cycling jerseys are all hand made pieces. During the production process there may be a small natural variation on sizing that should not exceed one half of an inch on any measurement.  
You will be pleased to know we DO NOT charge extra for our extra large sizes

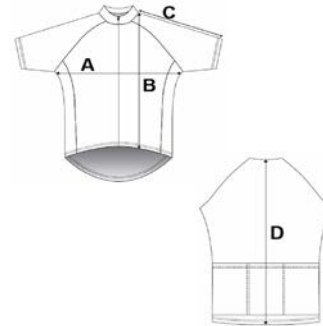
**NOTE: Sport Fit jerseys include a flexible, non-slip strip that provides comfortable traction against any surface to help garments remain in place during activity.**



**Woman's Sport Fit Cycling Jersey Measurements - Raglan Sleeve Style**

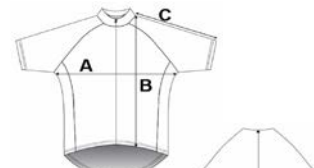
	A Chest Across	B Front Length	C Short Sleeve Length	D Back Length
2X Small	15.5" (39cm)	20.5" (52cm)	10.25" (26cm)	22.5" (57cm)
X Small	16.25" (41cm)	22" (56cm)	10.75" (27cm)	23.75" (60cm)
Small	17.25" (43.5cm)	22.75" (58cm)	11.75" (29.5cm)	24.5" (62cm)
Medium	18.25" (46cm)	24" (61cm)	11.75" (30cm)	25" (63.5cm)
Large	19" (48cm)	24.75" (63cm)	12.25" (31cm)	25.5" (65cm)
X Large	20" (51cm)	25.5" (65cm)	12.5" (32cm)	26.75" (68cm)
2X Large	20.75" (53cm)	26" (66cm)	13" (33cm)	28" (71cm)
3X Large	21" (53.5cm)	26.5" (67cm)	13.5" (35cm)	28.5" (72cm)
4X Large	21.5" (54.5cm)	27" (68.5cm)	13.75" (35cm)	29.5" (75cm)
5X Large	22.5" (57cm)	27.75" (70.5cm)	14.25" (36cm)	31.25" (79.5cm)

Note: Our custom cycling jerseys are all hand made pieces. During the production process there may be a small natural variation on sizing that should not exceed one half of an inch on any measurement.  
You will be pleased to know we DO NOT charge extra for our extra large sizes

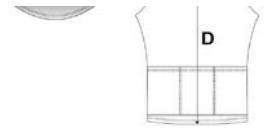


**Children's Sport Fit Cycling Jersey Measurements - Raglan Sleeve Style**

	A Chest Across	B Front Length	C Short Sleeve Length	D Back Length	Long Sleeve Length
3/4/	10.25" (26cm)	17.75" (45cm)	7.5" (19cm)	19" (48cm)	13.5" (34.5cm)
5/6/	11.5" (29.5cm)	19.25" (49cm)	8" (20cm)	20.5" (52cm)	16" (41cm)
7/8/	12.5" (31.5cm)	21" (53cm)	8.25" (21cm)	22" (56cm)	18" (46cm)



9/10/	13.5" (33cm)	22" (56cm)	8.5" (22cm)	23.25" (59cm)	20" (51cm)
11/12/	14" (35.5cm)	23.75" (60.5cm)	9" (23cm)	24.75" (63cm)	21.75" (55.5cm)
12/14/	15" (38.5cm)	26" (66cm)	9.4" (24cm)	27" (69cm)	23.5" (60cm)



**Note:** Our custom cycling jerseys are all hand made pieces. During the production process there may be a small natural variation on sizing that should not exceed one half of an inch on any measurement.